

# SHARP®

HIGH-SPEED COLOR DOCUMENT SYSTEMS ●●●●



  
**MX-6240N**  
**MX-7040N**



"Outstanding 61- to 70-ppm  
A3 Color MFP"  
MX-7040N (2013)  
MX-6240N (2014)



"Highly Recommended"  
Rating 2013



"Reliability Certified"  
2013



Sharp High-Speed Color Document Systems are designed to meet the growing needs of high volume business environments.

## BREAKTHROUGH PERFORMANCE WITH UNMATCHED VERSATILITY

Versatility

Unleash the potential of Sharp's advanced technology with the new MX-6240N and MX-7040N High-Speed Color Document Systems. The MX-6240N and MX-7040N combine a flexible, modular design with robust paper handling and productive output capabilities that can streamline your document workflow like never before. Built for high-volume office environments, small CRDs and copy rooms, the MX-6240N and MX-7040N are a perfect fit where productivity and reliability are essential.

A large 10.1" (diagonally measured) high-resolution, touch-screen display offers real-time scan preview with intuitive flick-and-tap editing to help ensure your documents are produced accurately and without waste. With Pantone® licensing, these models offer unprecedented levels of color fidelity—combined with 1200 x 1200 dpi print resolution and true Adobe® PostScript®, your business can produce professional looking color documents in-house with breathtaking image quality that is also economical. Sharp's Color Consistency System helps ensure brilliant, high-quality color output page after page. A new paper feed option utilizes air-feed technology, which offers higher reliability and enhanced media capabilities.

Built on the latest Sharp OSA® development platform, the MX-6240N and MX-7040N make integration with network applications and cloud services easier than ever. Sharp's industry-leading security platform incorporates standard 256-bit data encryption and overwrite protection to safeguard your business's intellectual property. And when it comes time to trade in, a convenient End-of-Lease feature can erase all job data and user data.



# PRECISION ENGINEERED FOR HIGH PRODUCTIVITY



POWERFUL

MULTI-FUNCTION

MULTI-TASKING

INTUITIVE

FLEXIBLE

Innovative features plus multi-function capability allow you to meet tomorrow's document needs today.

- Flexible modular design provides a **wide variety of configurations** from basic high-speed copying and printing to **professional folding** and **booklet making**
- **Scan preview** feature offers on-the-fly page editing with easy finger-tip navigation
- 150-sheet **Duplex Single Pass Feeder (DSPF)** scans documents at up to 150 images per minute
- New **triple air-feed** paper handling option offers **high reliability** and is virtually maintenance free
- Up to **8500-sheet paper capacity** supports media up to **110 lb. cover stock (300 gsm)**
- Sharp's **Color Consistency System** delivers high-quality color output and maintains optimum color balance and toner density page after page
- Standard PCL®6 and **true Adobe® PostScript®3™** with available Windows® XPS printing systems
- **Large 10.1"** (diagonally measured) high-resolution **color touch-screen display** with tilt viewing

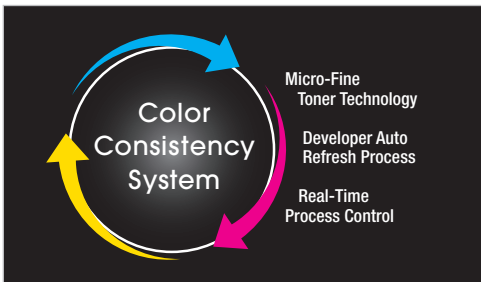


- **Pantone Licensing** offers unprecedented levels of **color fidelity** to the **PANTONE MATCHING SYSTEM®**
- True **1200 x 1200 dpi** printing with 8-bit processing provides beautiful images and enhanced clarity for fine details such as small text and graphics
- Standard **Job Management** makes it easy to print on-demand with the ability to retain jobs, combine jobs, repaginate jobs, edit pages within jobs and more
- Supports the latest **Sharp OSA® development platform**, enabling businesses to easily integrate with network applications and cloud services
- **Energy efficient** belt fusing offers **low power consumption**, fast warm up time, enhanced print quality and greater media capabilities, while the **auto power management** function can turn the machine on and off based on usage trends
- Supports Sharp's award-winning security platform with standard **256-bit data encryption**, up to 7 times **data overwrite protection**, and a convenient **End-of-Lease feature** that can erase all files on the hard disk drive, all user data, job status data and address book data at trade-in time

# INTELLIGENT FEATURES HELP STREAMLINE YOUR WORKFLOW



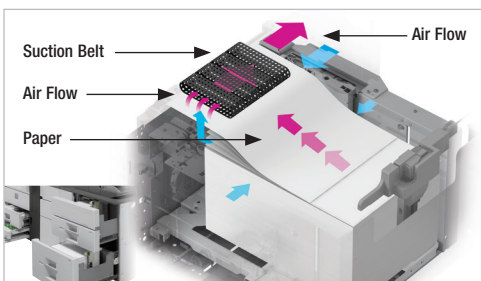
Intuitive menu screens enable you to easily edit documents in scan preview mode.



Sharp's Color Consistency System is a synergy of processes that helps ensure color output always looks brilliant and sharp.



On-the-fly toner cartridge replacement while your job is running helps maximize your productivity.



Triple air-feed LCT paper trays maximize reliability and minimize downtime. Pneumatic sensors maintain consistent air flow.

## Advanced technology that will exceed your expectations.

### A Smart Touch-Screen Helps You Get Your Work Done Fast

The new MX-6240N/7040N High-Speed Color Document Systems feature a 10.1" (diagonally measured) high-resolution LCD that goes beyond basic touch-screen menu navigation. With advanced features that include flick, tap, and slide, you can quickly access powerful functions. With scan preview, you can easily view and edit your job. A tilting display panel provides enhanced accessibility. A built-in retractable keyboard makes data entry quick and easy.

### A High-Speed Document System That Is Also High Performance

The new MX-6240N/7040N utilize a powerful multi-processor controller designed to quickly execute complex copy, print and scan jobs, even in busy office environments. Plus, with print speeds of 62 ppm and 70 ppm, the MX-6240N/7040N can help raise your productivity to new levels. With true 1200 x 1200 dpi print resolution with 8-bit processing, your business can produce professional looking documents with greater efficiency.

### High Quality Image Output That You Expect

The new MX-6240N/7040N utilize an innovative **Color Consistency System**, which is a synergy of image processes that helps ensure color output always looks as brilliant and sharp as the day the machine was installed.

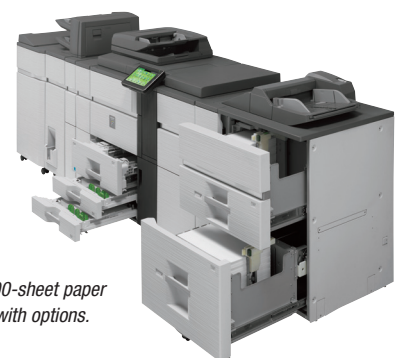
- Sharp's next generation **Micro-fine Toner Technology** ensures optimum color balance and edge definition, while maximizing toner yield and minimizing waste.
- The **Developer Auto-Refresh Process** mixes a small amount of carrier with toner. As toner is replenished into the developing unit, so is some carrier, extending developer life between maintenance cycles, resulting in less downtime.
- **Real-Time Process Control** monitors each of the primary colors (cyan, magenta, yellow and black) and automatically makes adjustments to ensure optimum color output and density. This process helps maintain beautiful, high-quality image output throughout each print job.



Developer Auto-Refresh Process

### Robust Paper Handling For Busy High-Volume Environments

Sharp understands the importance of productivity, that's why the new MX-6240N/7040N High-Speed Color Document Systems offer up to **8500-sheet paper capacity** and support **media types up to 110 lb. cover (300 gsm)**. Sharp's new paper feed option uses **air-feed technology**, which maximizes reliability and minimizes down time. A feature typically found on production devices and printing presses, the triple air-feed system directs air flow with precision accuracy to ensure proper paper handling. A standard 150-sheet dual head document feeder can scan up to 150 images per minute.



Up to 8500-sheet paper capacity with options.

# OUTSTANDING OUTPUT AND FLEXIBLE DOCUMENT DISTRIBUTION



Pantone Licensing offers unprecedented levels of color fidelity.

Powerful multi-tasking controller delivers true 1200 x 1200 dpi with 8-bit processing.

## Exceptional Print Quality with Professional Output

With the MX-6240N/7040N High-Speed Color Document Systems, your business can produce brilliant, high-quality color documents, as well B&W documents with crisp razor-sharp graphics. With true **1200 x 1200 dpi resolution**, even documents with fine detail will look great! **Standard true Adobe PostScript** drivers deliver extensive color control options, so you can manage color output right from your desktop. With Sharp's **advanced job retention** features, jobs can be stored on the hard drive to be reprinted again and again by walk-up users right from the control panel.

## Professional Color Results without the Hassle

Get the color results as the original design was intended with Pantone Licensing. The CMYK values have been precisely measured and calibrated by the expert color analysts at Pantone to ensure that the best reproduction of the PANTONE MATCHING SYSTEM® is achieved with the MX-6240N/7040N document systems.

## Integrated Network Scanning

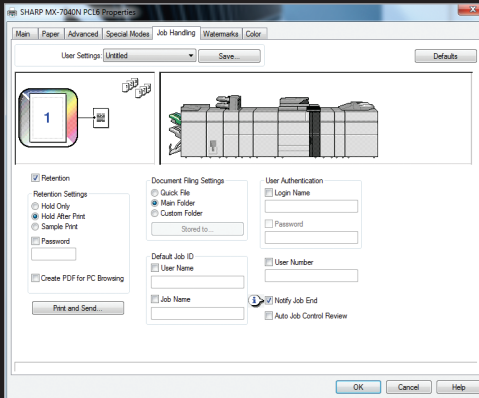
With Sharp's powerful **ImageSEND™** technology, you get one-touch distribution features that centralize document workflow, help reduce mail costs and help save time. With up to **seven destinations** – E-mail, Desktop, FTP, Network Folders (SMB), USB, Fax and Internet Fax – getting your documents where they need to go is as easy as pushing a button. With **Sharpdesk®** personal document management software, users can easily organize their scanned documents and integrate them into everyday workflow.

## Advanced Finishing Adds the Final Touch

The MX-6240N/7040N offers a wide range of high performance finishing options that can **give your documents a professional look** and feel.

- The MX-FN19 4000-sheet stacking finisher with 50-sheet stapling capacity speeds through large projects, giving you complete control over deadlines. Need robust booklet making? Choose the MX-FN22 4000-sheet **saddle stitch finisher** with **100-sheet stapling capacity**, which can produce up to **80-page saddle-stitched booklets**.
- The MX-CF11 **two-tray inserter** option enables you to insert covers and pre-printed documents into your job for producing professional booklets and other complex documents. With supported paper weights of up to 110 lb. Bristol (220 gsm), the inserter option can give your documents the finishing touch.
- To give your booklets a professional finished edge, the MX-TM10 **trimmer unit** option can cut the folded open edge of your documents for a smooth, straight, finished look.
- The MX-FD10 **multi-folding unit** option provides a variety of folds, including Z-fold, C-fold, Accordion-fold, Double-fold and Half-fold — your documents will look so good, everyone will think you have your jobs sent out to a printer.

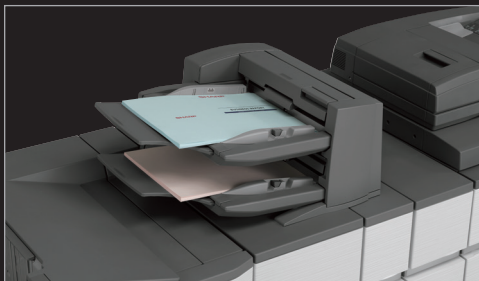
MX-FN22 saddle stitch finisher



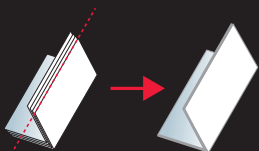
Job handling features enable you to retain print jobs on the hard drive for reprinting.



Sharp's Document Filing System with thumbnail preview makes it easy to locate and retrieve stored jobs.



MX-CF11 Two-tray inserter can insert covers up to 110 lb. Bristol (220 gsm).



MX-TM10 Trimmer Unit option can cut the folded open edge for a smooth, straight, finished look.



Z-fold



C-fold



Accordion-fold



Double-fold



Half-fold

# INTUITIVE USER INTERFACE ON 10.1-INCH COLOR LCD



Sharp's 5-level tilt screen allows for adjustment to a convenient viewing position.

## Navigates You Smoothly Through Advanced MFP Functions

Sharp's new high-resolution touch-screen display offers the customization and ease-of-use your business needs to elevate your office productivity to the next level. With the ability to change background screens, the layout and naming of the function keys, language display setting and more, you can quickly set up a custom user interface that meets the needs of your office. Whether your requirements are simple or complex, the MX-6240N/7040N High-Speed Color Document Systems can help you get the job done fast!

*For a College Campus Office: Set up a simple screen for walk-up teachers and administrators to retrieve courseware or initiate large print runs with ease.*

*Change the Theme: Easily change the menu colors and icon layout to suit the preferences of users in your office.*



*Change the Language: Walk-up users can easily choose from 24 different display languages with just a few key strokes.*



# CONFIGURATIONS TO SUIT VIRTUALLY ANY ENVIRONMENT

## Versatile and Customizable To Fit Your Needs

The MX-6240N and MX-7040N High-Speed Color Document Systems offer flexible paper handling and finishing options to accommodate everything from basic multi-function office use to advanced document output for small CRD environments and copy rooms.



MX-7040N shown with Three-hole Punch Unit, 50-sheet Staple/Saddle Stitch Finisher, 3500-sheet letter-size LCC, 100-sheet multi-bypass and right side exit tray.

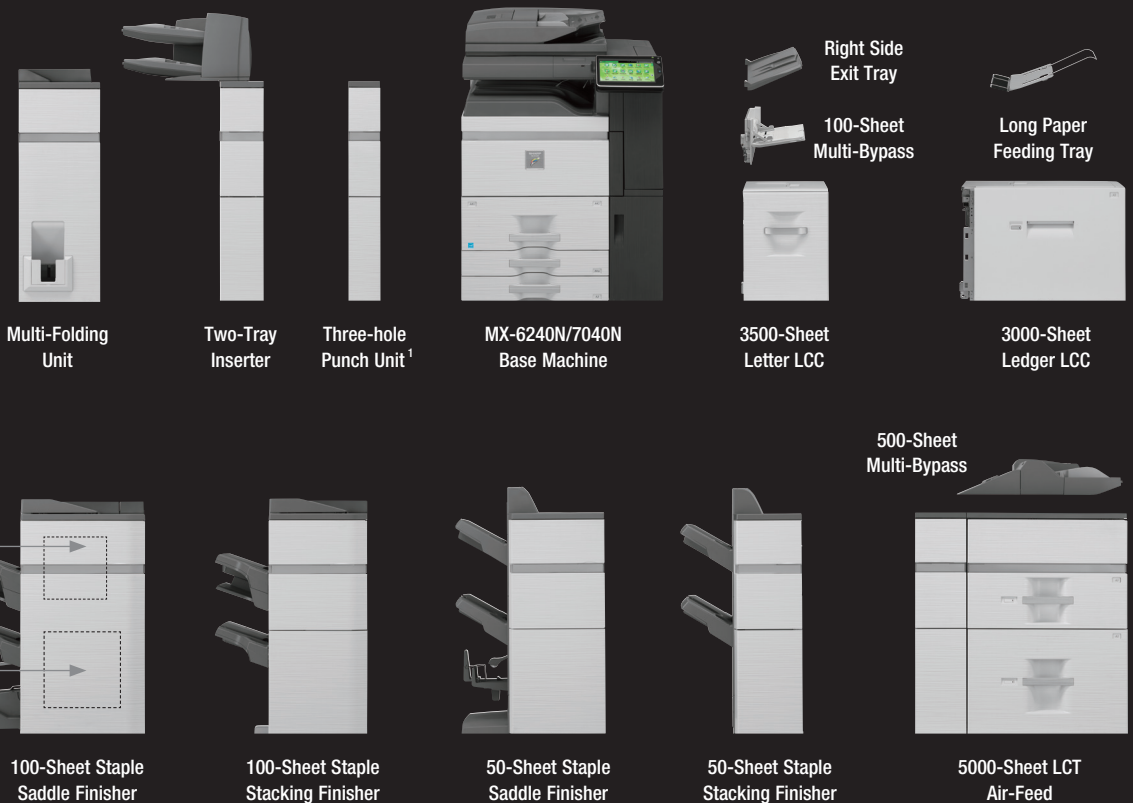


MX-7040N shown in full configuration with Curl Correction Unit, Inserter, Multi-Folding Unit, 100-sheet Staple/Saddle Stitch Finisher, 5000-sheet ledger-size LCT and 500-sheet multi-bypass.

## Modular Options Make It Easy To Build the System of Your Choice

Options for the MX-6240N and MX-7040N enable businesses to choose from four high performance finishers that offer up to 100-sheet stapling, 80-page saddle stitch booklet making and available three-hole punching. More advanced configurations include a two-tray inserter, multi-folding unit and trimmer unit. Multiple input options are available to suit your needs, including the Long Paper Feeding Tray, which supports paper sizes up to 11.69" x 47.25" for printing banners.

Flexibility



<sup>1</sup>For 50-sheet Staple Finishers.  
<sup>2</sup>For 100-sheet Staple Finishers.



## GET MORE OUT OF NETWORK RESOURCES



### Sharp OSA technology at a glance

- Automate tasks and save time with seamless integration with network applications and cloud-enabled services.
- Virtually eliminates repetitive tasks and streamlines workflow, increasing efficiency.
- Maximize your return on investment with tighter integration among IT assets.
- Industry-standard programming leads to faster deployment of new solutions.



Sharp OSA technology allows businesses to leverage the power of their network applications, back-end systems, even cloud-enabled services.

## Streamline your document workflow and enhance your productivity with Sharp OSA® technology.

### **Integrating With Network Applications And Cloud Services Has Never Been So Easy**

The MX-6240N/7040N High-Speed Color Document Systems offers **powerful document workflow capabilities** to help businesses leverage their network infrastructure, cloud-enabled services and more!\* While others are limited to a small circle of productivity, the Sharp OSA development platform allows businesses to leverage the power of their network applications, back-end systems, even cloud-enabled services, right from the touch-screen panel of the MX-6240N/7040N High-Speed Color Document Systems.

### **Save Time, Increase Efficiency**

You'll save time and increase the efficiency of everyday tasks with Sharp OSA technology because it can be virtually seamless to the user. Any MX-6240N/7040N anywhere in the organization can display choices that were once only available on a desktop PC. With **one-touch access** to business applications via Sharp OSA integration, you can start and finish a document distribution task without worry.

### **Customized Integration**

Sharp OSA technology also provides **powerful customization**. With the ability to personalize applications to deliver document processes tailored to your business, Sharp OSA technology can reduce redundancy and **streamline workflow**, helping to save time and **optimize productivity**. The latest version of Sharp OSA technology can reach beyond the firewall, connecting with cloud-based applications over the Internet. And since Sharp OSA technology utilizes industry-standard network protocols and Web API's, third-party software developers can deliver customized solutions to your business faster than ever.

### **The Convenience You Want With The Security You Need**

The MX-6240N/7040N combined with the Sharp OSA development platform is the logical choice for providing fast, **flexible access to documents and applications**...no matter where you are in the office. You also get the controlled access and tracking ability you require with tighter integration capabilities for network security and accounting applications.

\*Some features require optional equipment.



# ADVANCED DEVICE MANAGEMENT TOOLS MAXIMIZE EFFICIENCY



Sharp Remote Device Manager

The MX-6240N/7040N High-Speed Color Document Systems enhance operational efficiency through versatile device management capabilities.

### Sharp Remote Device Manager (SRDM)

Make management of your MX-6240N/7040N simple and straightforward with Sharp Remote Device Manager (SRDM). This easy-to-use software allows you to take control of the versatile system features and simplifies installation and management.

- With Sharp Remote Device Manager, administrators can easily manage the setup, configuration, device settings, cloning and more! Advanced features such as **Remote Front Panel** allow administrators and support personnel to view and control the LCD panel of the machine remotely from virtually any PC on the network!
- Event-driven, real-time service alerts, administrators and supervisors can achieve higher productivity. Now it is easier than ever to view service logs, click counts, history reports and more.

With **Printer Status Monitor**, network users can view printer conditions, check paper levels, toner, and more, all through an easy-to-use interface.



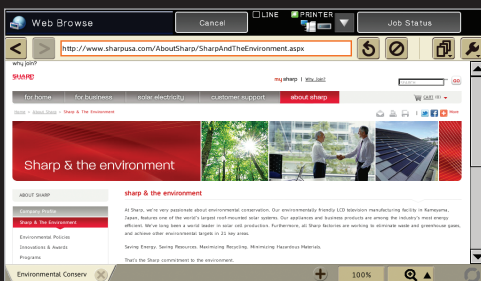
Remote Front Panel

### Take Charge of Color Usage and Costs

With Sharp's device management system, administrators and supervisors can **define user groups** on the MX-6240N/7040N to manage and restrict features, such as color copying, scanning or printing. Easily set up a custom user group to manage page counts (copy, print, scan or fax operations) for both color and B&W. This helps to simplify cost management of color imaging. The MX-6240N/7040N can store profiles for up to 1000 users.

### Integrated Web Browser Application

The MX-6240N/7040N provides a standard integrated **web browser** application right at the panel of the machine, enabling easy website access, navigation and printing.



Integrated web browser application enables easy website access.

### 24/7 On-Line Training With My Sharp™

Managing all of the advanced features of your Sharp product is simple and easy. Ask your Authorized Sharp Dealer about the **My Sharp** website. This dedicated customer training website is customized to your MX-6240N/7040N and allows you to locate resources and find information specific to your configuration, truly helping you maximize your investment.



## PRIVACY

## AUTHORIZATION

## CONFIDENTIALITY

## PROTECTION



### Sharp's Standard Key Security Features at a Glance

- 256-Bit Data Encryption
- Up to 7 times Data Overwrite Protection
- Group Account Management for up to 1000 Users
- Confidential Printing
- Port Management
- IP/MAC Address Filtering

## Innovative document and device protection helps ensure confidentiality.

To help protect your data, the MX-6240N/7040N offers several layers of **Standard Security**, making Sharp the optimum choice to help protect employees' privacy and intellectual property. As a leader in office equipment security, Sharp makes it easy for virtually any business or government entity to safely deploy digital copying, printing, scanning and faxing.

### **Authority Groups**

Advanced **Account Management** enables administrators to set authority groups for access to features of the MX-6240N/7040N. Administrators can control which department, for instance, has full access to copying, printing, scanning and/or fax. Walk-up users enter a code, Local Name and Password, or LDAP User Authentication to access the features assigned to their group.

### **Data Encryption and Overwrite**

To help protect your data, the MX-6240N/7040N can encrypt document data using AES (Advanced Encryption Standard) **256-bit encryption**. The MX-6240N/7040N can also erase the temporary memory on the hard drive by overwriting the encrypted data up to seven times, offering an unprecedented level of assurance. A convenient **End-of-Lease feature** overwrites all data, including the Document Filing area, user data, job status data and address book.

### **Network Scanning Access Control**

To help protect your network from unauthorized e-mail communications, the MX-6240N/7040N supports **User Authentication**, requiring users to login before performing any network scanning operations.

### **Control Device Access Over the Network**

To help restrict access to the device over the network, the MX-6240N/7040N offers IPsec, SMB and extended support for **SSL Encryption** (Secure Sockets Layer), **IP/MAC** address filtering, IEEE 802.1x authentication, protocol enable/disable and port management for maximum security.

### **Documents Remain Confidential**

The MX-6240N/7040N offers **Confidential Printing**, which when used, requires users to enter a PIN code in order to print a queued document. To help protect your direct-print documents from unauthorized viewing, the MX-6240N/7040N offers encrypted PDF printing and scanning. Additionally, **Secure Fax Release** ensures received fax documents are held in memory until an authorized user enters a PIN code, so that compliance with healthcare regulations such as HIPAA is easier.

### **Tracking and Auditing Information**

Legislation and industry policies require companies to be more aware of information flow from their offices. Sharp offers both built-in and additional hardware/software which allows users to **control, access and track usage** of each device on the network.

### **Data Security Kit (Optional)**

For maximum protection, the optional data security kit offers additional features, such as **Data Overwrite on-demand** and at power up, Document Filing access control, **Incorrect Password Lockout** and Restricted Status Display and Restricted List printing.

These scalable security offerings aim to protect your intellectual property, preserve confidential information and help your business to meet regulatory requirements, such as the Health Insurance Portability and Accountability Act (HIPAA) and the Gramm-Leach-Bliley Act (GLB). For additional information visit: [www.sharppusa.com/security](http://www.sharppusa.com/security).



## COMMITTED TO HELPING PROTECT THE ENVIRONMENT

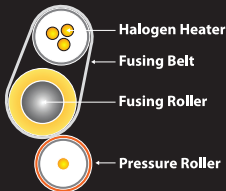


### Advanced Energy Saving Features

The MX-6240N/7040N utilizes several energy efficient technologies to minimize power consumption and maximize energy savings.

- An LED exposure lamp reduces power significantly when compared to conventional exposure lamps.
- A customizable seven-day power management scheduler allows businesses to define the days and times when power will be turned on and turned off.
- Sharp's Auto Power Management function allows the device to be set to shut off automatically based on usage trends.
- Sharp's Eco-Scan mode can shut off the fuser when scanning documents, previewing images, faxing and other operations.

State-of-the-art belt fusing system consumes less power and shortens warm up time.



Sharp's Environmental Initiatives and dedication to developing energy efficient document systems set a high standard for the industry.

### An Environmentally Responsible Approach to Product Design

The MX-6240N/7040N High-Speed Color Document Systems utilize Sharp's advanced **micro-fine toner technology**, which offers a lower consumption rate and produces less waste than conventional toners, resulting in longer replacement intervals. Sharp supplies are packaged using fully **recyclable materials**. Long-life consumable parts help minimize service intervals and down time, resulting in lower operating costs. With two different energy saving modes, power can be reduced or shut off at set intervals. The MX-6240N/7040N document systems are **ENERGY STAR® certified** and **RoHS compliant** to restrict the use of hazardous substances.

### Toner Recycling Program

As part of our commitment to helping preserve the environment, Sharp offers our customers zero waste land fill recycling for all Sharp consumables, including cartridges, bottles, toner collection containers and drum units. Sharp encourages customers to recycle their used Sharp toner cartridges in bulk by providing a pre-paid Recycling Kit for their return to our facility.

### Environmental Leadership

As a testament to our commitment to the environment, Sharp is a three-time winner of the **ENERGY STAR® annual Excellence in Energy Proficiency Product Design**. Sharp is also a four-time winner of the **SmartWay<sup>sm</sup> Excellence Award**, which recognizes companies for conserving energy and lowering greenhouse gas emissions in logistics and transportation. Sharp was also a previous recipient of the **Excellence in Partnership Green Contractor Award** and the **Evergreen Award** from the General Services Administration (GSA) and the Coalition for Government Procurement. These awards recognize environmentally responsible businesses and their efforts on recycling, waste reduction and affirmative procurement practices.

### Global Initiatives

Sharp is committed to environmental sustainability and corporate responsibility including planning, design, manufacturing, distribution and product end-of-life management. For more information about Sharp's environmental leadership including information about energy efficient products, electronics or toner cartridge recycling, please visit [www.sharppusa.com/environment](http://www.sharppusa.com/environment).

# MX-6240N/7040N SPECIFICATIONS

## Main Specifications

<b>MX-6240N/</b> <b>MX-7040N</b>	Base models include LCD, 150-sheet DSPF, 3000-sheet paper capacity (two tandem 2000-sheet trays/two 500 sheet trays), 1-TB hard disk drive, PCL6/Adobe® PostScript® 3™ network printing, color network scanning, web browser, retractable keyboard and MX-AMX2 application communication module												
<b>Type</b>	Console, color multi-function digital document system												
<b>Display</b>	10.1 (diagonally measured) color dot matrix high-resolution touch panel tilting display. 1024 x 600 dots (W-SVGA)												
<b>Functions</b>	Copy, print, network print, network scan, document filing and fax <sup>1</sup>												
<b>Copy System</b>	Dry electrostatic transfer/Dual component developer/Magnetic brush development/OPC drums/Belt type fusing/white LED exposure												
<b>Originals</b>	Sheets and bound documents												
<b>Max Original Size</b>	11" x 17"												
<b>Copy Size</b>	Min. 5½" x 8½", Max. 11" x 17" + 12" x 18"												
<b>Copy Speed</b>	62/70 ppm B&W/Color (8½" x 11")												
<b>Multiple Copy</b>	Max. 9999 copies												
<b>First Copy Time (in Seconds)<sup>2</sup></b>	<table border="1"> <tr> <td></td> <td>MX-6240N</td> <td>MX-7040N</td> </tr> <tr> <td>B&amp;W Color</td> <td>Color</td> <td>B&amp;W Color</td> </tr> <tr> <td>Platen Glass</td> <td>4.0 5.6</td> <td>3.7 5.1</td> </tr> <tr> <td>DSPF</td> <td>6.5 9.2</td> <td>6.3 8.8</td> </tr> </table>		MX-6240N	MX-7040N	B&W Color	Color	B&W Color	Platen Glass	4.0 5.6	3.7 5.1	DSPF	6.5 9.2	6.3 8.8
	MX-6240N	MX-7040N											
B&W Color	Color	B&W Color											
Platen Glass	4.0 5.6	3.7 5.1											
DSPF	6.5 9.2	6.3 8.8											
<b>Warm Up Time</b>	55 seconds or less <sup>2</sup>												
<b>Magnification</b>	25% to 400% in 1% increments (with document feeder 25%-200%)												
<b>Original Feed</b>	150-sheet DSPF												
<b>Scan Speed</b>	DSPF Scan: Up to 150 IPM <sup>2</sup> (Monochrome); Up to 150 IPM <sup>2</sup> (Color)												
<b>Original Sizes</b>	5½ x 8½", 8½" x 11", 8½" x 11" R, 8½" x 14", 11" x 17"												
<b>Paper Capacity</b>	Std. 3000 Sheets/Max. 8500 Sheets												
<b>Paper Feed Sizes</b>	Standard: Tandem Tray 1 - 1200 sheets (letter size), Tandem Tray 2 - 800 sheets (letter size), Trays 3/4 - 500 sheets ea. (letter/legal/ledger/statement/12" x 18"). Optional: Multi-bypass Tray (for machine) - 100 sheets (letter/legal/ledger/statement/monarch or COM10 envelopes/12" x 18"), Multi-bypass (for LCT) - 500 sheets (letter/legal/ledger/statement/12" x 18"), LCT (2-Drawer) - 2500-sheets each drawer (letter/legal/ledger/12" x 18"), Letter LCC - 3500 sheets (letter), Ledger LCC: 3000 sheets (letter/legal/ledger).												
<b>Paper Weights and Types</b>	Tandem Trays - 16-28 lb. bond, Trays 3/4 - 16 lb. bond to 100 lb. Bristol, Multi-bypass Tray (for machine) - 15 lb. bond to 110 lb. cover, Multi-bypass Tray (for LCT) - 15 lb. bond to 100 lb. Bristol, LCT (2-drawer) - 15 lb. bond to 110 lb. cover, Letter LCC/Ledger LCC - 16 lb. bond to 100 Bristol. Supported paper types include thin, plain, recycled, color, letter head, pre-printed and pre-punched, embossed and glossy.												
<b>Duplexing</b>	Standard automatic duplex copying and printing												
<b>CPU</b>	Up to 1.8 GHz Multi-Processor Controller												
<b>Interface</b>	RJ-45 Ethernet (10/100/1000Base-T), USB 2.0 (2 host ports, front and rear), USB 2.0 (1 device port)												
<b>Memory</b>	Standard 5 GB												
<b>Hard Disk Drive</b>	1 TB												
<b>Copy Resolution</b>	Scan: B&W/color: 600 x 600 dpi; Copy: B&W/color: 600 x 600 dpi												
<b>Color Modes</b>	Photo, Full Color Mode, Monochrome (B/W)												
<b>Exposure Control</b>	Modes: Text, Text/Photo, Text/Printed-Photo, Printed-Photo, Photo, Map, Pale-Color. Settings: Auto or 9 step manual												
<b>Halftone</b>	256 gradations/2 levels (monochrome)												
<b>Copy Features</b>	Electronic sort, Auto Color Sensing, Auto Paper Selection, Auto Magnification Selection (AMS), image preview/edit, auto tray switching, rotate copy, reserve copy, tandem copy, book copy, margin shift, edge/center erase, book divide, dual page, cover/insert page, OHP insert, job build, card shot, blank page skip, mirror/reverse, proof, pamphlet, watermark, custom image, job programs.												
<b>Account Control</b>	Up to 1000 users. Supports user-number authentication (on device), login name/password or login name/password (via LDAP server) for Copy, Print, Scan, Fax and document management.												
<b>Output Tray Capacity</b>	Main output tray (top) 250 sheets (face down)												
<b>Firmware</b>	Flash ROM with local (USB), network update capability and firmware update 1 to N with SRDM (Sharp Remote Device Management)												
<b>Configuration</b>	Web-based management with user/administrator level login, cloning (1 to N) with SRDM and remote front panel access												
<b>Service/Functions</b>	Remote front panel, remote access to service logs and click counts												
<b>Accessibility</b>	Tilt Front Panel, Adjustment of Key Touch-Send and Speed,												
<b>Features</b>	Document Feeder Free Stop, Job Programs, Remote Front Panel, Universal Grip for Paper Trays, and Disable Screen Timeout												
<b>Environmental</b>	International Energy Star Program Ver. 1.1, Law on Promoting Green												
<b>Standards</b>	Purchasing, European RoHS (Restriction of Hazardous Substances)												
<b>Power Source</b>	AC 208-240 VAC, 60 Hz, 20 Amps												
<b>Power Consumption</b>	Maximum: 2880 W or less												
<b>Weight</b>	MX-6240N/7040N: Approx. 490 lbs.												
<b>Approx. Dimensions</b>	33 1/4" (w) x 33 1/4" (d) x 48" (h)												

## Network Printing System (Standard)

<b>PDL</b>	Standard PCL <sup>®</sup> 6 compatible Adobe®, PostScript <sup>®</sup> 3™, optional XPS
<b>Resolution</b>	1200 x 1200 dpi/8-bit processing
<b>Print Speed</b>	62/70 pages per minute (8½" x 11")
<b>Print Drivers</b>	Windows Server <sup>®</sup> 2003-2008, Windows XP, Windows XP x64, Windows Server 2003-2008 x64, Windows Vista <sup>®</sup> , Windows Vista <sup>®</sup> x64, Windows 7, Windows 7 x64, MAC OS X (including 10.4.11, 10.5-10.5.8, 10.6.5-10.6.8, 10.7-10.7.2), all MAC PPD.
<b>Features</b>	Auto configuration, continuous printing, electronic sorting, N-up printing, duplex printing, transparency inserts, margin shift, image rotation, different cover page, poster print, job bypass print, job retention, confidential print, proof print, user authentication, image stamp and watermarks. Additional features: Multiple pamphlet print, network tandem print, carbon copy print mode, different cover page/last page/other page, form overlay, tab paper settings, tab printing, chapter inserts and page Interleave <sup>1</sup>
<b>Direct Printing</b>	File Types: TIFF, JPEG, PCL, PRN, TXT, PDF, Encrypted PDF, PostScript and Windows XPS <sup>1</sup> (FTP, Web page, E-mail and USB)
<b>Resident Fonts</b>	80 outline fonts (PCL), 139 fonts (PS)
<b>Interface</b>	RJ-45 Ethernet 10/100/1000 Base-T, USB 2.0
<b>Operating Systems</b>	Windows Server 2003-2008, Windows XP, Windows Vista, Windows 7, MAC OS 9-9.2.2, MAC OS X 10.2.8, 10.3.9, 10.4.11, 10.5-10.5.8, 10.6-10.6.5, Novell <sup>®</sup> Netware <sup>®</sup> 3x, 4x, 5x, Sun <sup>®</sup> OS 4.1x, Solaris <sup>®</sup> 2x, Unix <sup>®</sup> , Linux <sup>®</sup> and Citrix <sup>®</sup> (Metaframe, Presentation Server 4, 4.5) and Windows Terminal Services. <sup>1</sup>
<b>Network Protocols</b>	TCP/IP (IPv4, IPv6, IPSEC) SSL (HTTP, IPP, FTP), SNMPv3, SMTP, POP3, LDAP, 802.1x for Windows and Unix, LPD and LPR for Unix. IPX/SPPX <sup>®</sup> for Novell environments and EtherTalk <sup>®</sup> , AppleTalk <sup>®</sup> for Macintosh <sup>®</sup> environments. <sup>1</sup>
<b>Printing Protocols</b>	LPR, IPP, IPPS, PAP, Raw TCP (port 9100), FTP and Novell Pserver/Printer
<b>Network Security</b>	IP/MAC address filtering, protocol filtering, port management, user authentication and document administration. <sup>1</sup>
<b>Security Standards</b>	IEEE-2600 <sup>™</sup> -2008, DoD (NIST/SSP) #11, DoD Directive 8500.2, DoD (DISA)

## Network Scanning System (Standard)

<b>Scan Modes</b>	Standard: Color, monochrome, grayscale
<b>Max. Original Size</b>	11" x 17"
<b>Optical Resolution</b>	600 dpi
<b>Output Modes</b>	600 dpi, 400 dpi, 300 dpi, 200 dpi, 150 dpi, 100 dpi
<b>Image Formats</b>	Monochrome: TIFF, PDF, Encrypted PDF, XPS Color: Grayscale, Color TIFF, JPEG, PDF, Encrypted PDF, XPS Internet Fax: TIFF-FX, FIFF-F, TIFF-S1
<b>Image Compression</b>	Monochrome Scanning: Uncompressed, G3 (MH), G4 (MR/MMR) Color/Grayscale: JPEG (high, middle, low)
<b>Scan Destinations</b>	Internet Fax mode: MH/MMR (option); E-mail, Desktop, FTP, Folder (SMB), USB, Internet fax (option); Super G3 fax (option)
<b>One-touch Dest.</b>	Up to 2000 (combined scan destinations)
<b>Group Destinations</b>	Up to 500
<b>Programs</b>	48 (combined)
<b>Max. Jobs</b>	Up to 100
<b>Network Protocols</b>	TCP/IP and SSL (includes HTTP, SMTP, LDAP, FTP, POP3), SMB, ES/MTP and 802.1x.
<b>Network Security</b>	E-mail server user authentication for LDAP and Active Directory
<b>Software</b>	Sharpdesk <sup>®</sup> desktop personal document management software (1 user license included)
<b>Sharp OSA Platform</b>	Application Communication Module (MX-AMX2) standard

## inserter (MX-CF11 Option)

<b>Type</b>	Standing, 2 Trays
<b>Paper Capacity</b>	Upper Tray: 200 Sheets; Lower Tray: 200 Sheets (20 lb. bond)
<b>Paper Weight</b>	16 lb. bond to 100 lb. Bristol (Paper feeding)
<b>Paper Size</b>	Up to 12" x 18"
<b>Power Consumption</b>	70 W or Less
<b>Power Source</b>	24 Volts (Supplied by Main Unit)
<b>Dimensions</b>	21 1/2" (w) x 30" (d) x 50 1/2" (h)
<b>Weight</b>	Approx. 51 lbs.

## Multi-Folding Unit (MX-FD10 Option)

<b>Type</b>	Floor Standing
<b>Dimensions</b>	13 1/2" (w) x 30 1/2" (d) x 41 1/2" (h)
<b>Weight</b>	Approx. 146 lbs.
<b>Power Source</b>	Powered by MX-FN21/FN22 Finisher
<b>Power Consumption</b>	Maximum: Standby: 23 W or less; In Operation: 150 W or less
<b>Folding Mode</b>	Z-fold, C-fold, accordion fold, double-fold, half-fold

## 4K 100-Sheet Stapler/Finisher (MX-FN21: option)

<b>Type</b>	4000-sheet console stapler finisher (100-sheet stapling)
<b>Output Trays</b>	Upper tray: Moving offset tray (up to 1500 letter size sheets) Middle tray: 250 sheets (letter size, non-stapled) Lower tray: Moving offset tray (up to 2450 letter size sheets)
<b>Stapling Capacity</b>	Up to 100 sheets (letter/statement)
<b>Stapling Media</b>	Plain paper, letter/legal/ledger size or mixed
<b>Stapling Positions</b>	1 front, 1 rear, or 2 point stitching
<b>Hole Punching</b>	Optional three-hole punch unit MX-PN13B
<b>Power Source</b>	120 VAC, 60 Hz, 15 Amps
<b>Power Consumption</b>	220w/350w with MX-MF10
<b>Weight</b>	Approx.: 134.5 lbs.
<b>Dimensions</b>	Approx.: 30 3/4" (w) x 30" (d) x 41" (h) (with tray extended)

## 4K 100-Sheet Stapler/Saddle Stitch Finisher (MX-FN22: option)

<b>Type</b>	4000-sheet console stapler finisher (100-sheet stapling)
<b>Output Trays</b>	Upper tray: Moving offset tray (up to 1500 letter size sheets) Middle tray: 250 sheets (letter size, non-stapled) Lower tray: Moving offset tray (up to 2450 letter size sheets)
<b>Stapling Capacity</b>	Up to 100 sheets (letter/statement)
<b>Stapling Media</b>	Plain paper, letter/legal/ledger size or mixed
<b>Stapling Positions</b>	1 front, 1 rear, or 2 point stitching
<b>Saddle Stitch</b>	Center stitch/center fold (2 staples) letter/legal/ledger paper sizes
<b>Saddle Stitch</b>	Up to 5 sets (16-20 sheets)/10 sets (11-15 sheets per set)/15 sets
<b>Max. Sets</b>	(6-10 sheets per set)/25 sets (1-5 sheets per set)
<b>Power Source</b>	120 VAC, 60 Hz, 15 Amps
<b>Power Consumption</b>	220w/350w with MX-MF10
<b>Weight</b>	Approx.: 134.5 lbs.
<b>Dimensions</b>	Approx.: 30 3/4" (w) x 30" (d) x 41" (h) (with tray extended)

## Optional Equipment

<b>MX-LC12</b>	3500-sheet Large Capacity Cassette (letter) <sup>1</sup>
<b>MX-LC13</b>	5000-sheet Large Capacity 2-Drawer Air Feed Tray (ledger) <sup>1</sup>
<b>MX-LCX3N</b>	3000-sheet Large Capacity Cassette (ledger) <sup>1</sup>
<b>MX-MF10</b>	100-sheet Multi-bypass Tray (for machine)
<b>MX-MF11</b>	500-sheet Multi-bypass Tray (for MX-LC13)
<b>MX-LT10</b>	Long Paper Feeding Tray (requires MX-MF10)
<b>MX-FN19</b>	4K Stacking 50-Sheet Staple Finisher <sup>1</sup>
<b>MX-FN20</b>	4K Stacking 50-Sheet Staple/Saddle Stitch Finisher <sup>1</sup>
<b>MX-FN21</b>	4K Stacking 100-Sheet Staple Finisher <sup>1</sup>
<b>MX-FN22</b>	4K Stacking 100-Sheet Staple/Saddle Stitch Finisher <sup>1</sup>
<b>MX-CF11</b>	2-Tray Inserter Unit <sup>1</sup>
<b>MX-FD10</b>	Multi-folding Unit <sup>1</sup>
<b>MX-RB12</b>	Paper Pass Unit (for machine)
<b>MX-RB13</b>	Relay Unit <sup>1</sup>
<b>MX-RB14</b>	Paper Pass Unit (for MX-LC13)
<b>MX-RB15</b>	Curl Correction Unit <sup>1</sup>
<b>MX-TM10</b>	Trimming Unit <sup>1</sup>
<b>MX-PN12B</b>	3-Hole Punch Unit (for MX-FN19/FN20)
<b>MX-PN13B</b>	3-Hole Punch Unit (for MX-FN21/FN22)
<b>AR-SC2</b>	Staple Cartridge (for MX-FN19/FN20)
<b>AR-SC3</b>	Staple Cartridge (for MX-FN20)
<b>MX-SCX1</b>	Staple Cartridge (for MX-FN22)
<b>MX-SCX2</b>	Staple Cartridge (for MX-FN21/FN22)
<b>MX-TR14</b>	Right Side Exit Tray
<b>MX-TU14</b>	Center Exit Tray
<b>AR-SU1</b>	Stamp Unit (requires AR-SV1 Stamp Cartridge)
<b>AR-SV1</b>	Stamp Cartridge (required for AR-SU1)
<b>MX-PF10</b>	Bar Code Font Kit
<b>MX-PUX1</b>	XPS Expansion Kit
<b>MX-EB11</b>	Enhanced Compression Kit
<b>MX-FX11</b>	Fax Expansion Kit
<b>MX-FWX1</b>	Internet Fax Expansion Kit
<b>MX-EB15</b>	HDD Mirroring Expansion Kit
<b>MX-EC50</b>	CAC Reader (requires Data Security Kit)
<b>MX-FR36U</b>	Commercial Data Security Kit (not available at time of launch)
<b>MX-AMX1</b>	Application Integration Module
<b>MX-AMX3</b>	External Accounting Module

## Supplies

<b>MX-62NTBA</b>	Black Toner Cartridge
<b>MX-62NTCA</b>	Cyan Toner Cartridge
<b>MX-62NTMA</b>	Magenta Toner Cartridge
<b>MX-62NTYA</b>	Yellow Toner Cartridge
<b>MX-62NVBA</b>	Black Developer
<b>MX-62NWSA</b>	Cyan/Magenta/Yellow Developer
<b>MX-62NRSA</b>	Drum
<b>MX-700HB</b>	Toner Collection Container

<sup>1</sup> Some features require optional equipment.  
<sup>2</sup> Specification may vary depending on product configuration, machine settings and operating conditions.



SHARP ELECTRONICS CORPORATION  
100 Paragon Drive, Montvale, NJ 07645  
1-800-BE-SHARP • www.sharppusa.com

Design and specifications subject to change without notice. Sharp, Sharp OSA, Sharpdesk, My Sharp, and all related trademarks are trademarks or registered trademarks of Sharp Corporation and/or its affiliated companies. Windows, Windows Server and Windows Vista are trademarks or registered trademarks of Microsoft Corporation. All other trademarks are the property of their respective owners.

