

Xerox® WorkCentre®
7970
Tabloid-size
Color
Multifunction Printer



Xerox® WorkCentre® 7970 Color Multifunction Printer

Discover new ways to work.





To excel in business today you need industry leading performance and convenience features that streamline processes and increase productivity.

Xerox, as your technology partner, will provide you with solutions that get things done. On time and without a second thought.

You can be confident that wherever you are, your documents will be printed, scanned or faxed to the appropriate location. Whether in the same building or across the world. And be assured that what you need for your meeting will always be ready. Xerox provides you with a complete solution that's scalable, giving you the time to concentrate on what matters – your business.

The solution: Xerox® ConnectKey® Technology and the Xerox® WorkCentre® 7970.



Be ready to respond.

An opportunity can present itself when least expected and you need to have the technology and solutions at hand to react quickly. Xerox gives you the tools to streamline workflows, create new efficiencies, and take the productivity of your team to a higher level.

Easy: From Start to Finish

The Xerox® WorkCentre® 7970 enhances office productivity with fast copy and print speeds up to 70 ppm in black-and-white and color, making it the perfect device for large workgroups and many document-intensive environments.

In addition, the brightly illuminated 9-inch color touch screen provides personalization of existing workflows.

Scan better and faster.

Onboard scanning solutions are standard with such features as Optical Character Recognition with searchable PDF creation, Secure PDF and Scan to Email and Network. Plus, single pass scanning simultaneously scans both sides of two-sided documents allowing them to be scanned, copied, emailed and digitally distributed quicker than ever before.

Limitless Possibilities

Transform the way your business gets vital work done with the power of Xerox® Workflow Solutions, built on our Xerox Extensible Interface Platform®. Choose the right solution that fits your business, whether it's hosted within the cloud or locally on your server.

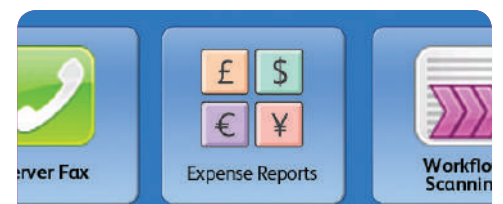
Some examples of Xerox® Workflow Solutions users can access via the color touch screen interface:

- **Xerox® ConnectKey® for SharePoint® or Xerox® ConnectKey® for DocuShare®.** Scan files directly into Microsoft® SharePoint or Xerox® DocuShare® and other Windows® folders. Plus, you can go beyond basic file storage and PDF creation by automatically converting documents to intelligent, structured data with easy file naming and routing tools.

- **Xerox® ConnectKey® Share to Cloud.**

Our cloud-based scanning solution provides easy, secure, scalable scanning to popular cloud-based repositories such as Google Docs™, Salesforce.com, Office 365 and Dropbox™, using custom-designed workflows that leverage our Xerox Extensible Interface Platform technology.

Learn more about Xerox® Workflow Solutions at www.office.xerox.com/software-solutions.



Single Touch Scanning

Use the Single Touch Scan feature to create a dedicated, easy-to-locate scan button directly on the color touch screen interface. Assign the Single Touch Scan button its own scanning workflow for fast document distribution and archiving.



Access from anywhere.

The world has become your office. Your office is the coffee shop, an airport lounge, or the back of a cab. The Xerox® WorkCentre® 7970 lets you work where and when you want. It's accessible and easy to use, enabling you to complete your work no matter where you are.



Remote Control Panel

Remotely operate the WorkCentre 7970 control panel from any office PC as though you were standing at the device. The Remote Control Panel makes it easier and more convenient to train users and for IT staff to remotely view and monitor the user interface. And during a remote session, walk-up users are notified at the device to prevent simultaneous system changes. Plus, advanced print drivers and free device management tools let you remotely monitor real-time performance and available resources for greater uptime.

Direct Access from Anywhere

The WorkCentre 7970 gives your office staff the luxury of controlling device functions from any workstation. Plus, mobile professionals can access the communication tools and productivity solutions regardless of location.

- **Xerox® Mobile Print and more.** Take the mystery and anxiety out of wireless and mobile device printing. Xerox has all the options to enable secure, accurate printing from most mobile devices, to any printer or multifunction printer, regardless of brand. Get industry-leading accuracy when printing native Microsoft® PowerPoint®, Word® and other standard files. Plus, Xerox offers IT-friendly optional capabilities such as PIN code access, multiple mobile operating systems and more. Whether offsite or onsite, learn more about why Xerox is the only choice for today's mobile professionals by visiting www.xerox.com/mobile.

- **Mopria™ certified.** The WorkCentre 7970 supports the new Mopria standards that help simplify printing from mobile devices.
- **Xerox® Print Service Plug-in for Android™.** This plug-in enables printing to many Xerox® printers and MFPs without the need for third-party apps or additional print drivers.
- **Apple® AirPrint™.** Print email, photos and important office documents directly from your Apple iPhone® or iPad® with no drivers to install and no cables to connect. With AirPrint, your iPhone or iPad automatically locates and connects to the AirPrint-enabled WorkCentre 7970 device over your office Wi-Fi network.
- **Optional Wi-Fi connectivity.** Administrators can connect the WorkCentre 7970 anywhere, without the need for network cabling.



Create a secure environment.

The Xerox® WorkCentre® 7970 multifunction printer can help safeguard your devices, your data and your business. Xerox offers advanced solutions from security industry leaders that protect your assets against data breaches, prevent unauthorized access and keep you one step ahead of security threats.

- **Prevent unauthorized access.** Permit only authorized users to access the device with user permissions, network authentication, IP filtering, and smart card, role-based and function-level login.
- **Protect your confidential information.** Safeguard all sensitive data with encrypted PDF files for scanning; complete hard drive encryption, compliant with the 256-bit AES FIPS 140-2 standard; and Image Overwrite with a 3-pass scrub process to ensure total deletion of all data fragments.
- **Gain complete visibility.** Prevent IP theft and ensure non-repudiation by having total visibility into the device and network. With security policy management and tracking of all activity on the device with Audit Log, you can know who accessed what, when.
- **Stay compliant with regulations.** WorkCentre 7970 devices comply with the latest security standards across industries, including government, finance and healthcare. These include Common Criteria, HIPAA, Data Protection Act, COBIT and more. These devices can conform to any standard, with controls available to match your needs.
- **Manage threats proactively.** As new threats emerge, Xerox proactively monitors security clearinghouses for new vulnerabilities and provides patches when necessary, ensuring your equipment stays current and your data is kept safe. Plus, you can receive up-to-the-minute updates via RSS feeds and stay informed via www.xerox.com/security.



Powerful Partnerships

The WorkCentre 7970 includes McAfee® technology integration, resulting in the industry's first lineup of multifunction printers that protect themselves from potential outside threats. McAfee's whitelisting technology ensures only safe, pre-approved files or functions are executed on your devices, minimizing the need to manually update software levels against new security threats. Also, seamless integration with the Xerox® Managed Print Services toolset and McAfee ePolicy (ePO) allows for easy tracking and monitoring.

Plus, automatic Cisco® TrustSec Identity Services Engine (ISE) integration provides comprehensive visibility of all ConnectKey enabled MFPs' endpoints to enforce IT-centric security policies and compliance.



High impact. Affordable price.

Make a lasting first impression with robust color documents from the Xerox® WorkCentre® 7970 multifunction printer. Deliver results while minimizing costs with tools that let you choose when, where and how much color you use.

Crisp, Vivid Color

The Xerox® WorkCentre® 7970 multifunction produces unrivaled color documents with the simple touch of a button.

- **Colorful results.** Print brilliant, eye-catching images on a wide variety of stock sizes and paper weights. As large as 12.6 x 19 inches (320 x 483 mm) and up to 300 gsm.
- **Finished with finesse.** The WorkCentre 7970 produces professional looking output with a multitude of finishing capabilities, including saddle-stitched booklet making, Z and C folding, hole punching and multi-position stapling.
- **High-resolution output.** 1200 x 2400 dpi, photo quality color images and crisp text gives your documents clarity and impact.

- **It's all in the details.** Digital Image Registration Control Technology and advanced print heads ensure consistently exceptional image registration.
- **Customize your print driver settings for economy and efficiency.** For example, choose N-up for printing multiple pages on a single sheet as your default. Adjust settings for specific applications, such as always printing emails in black-and-white.
- **Print responsibly.** By default, our print driver is set to two-sided printing, and the Earth Smart feature allows you to select other default settings that encourage responsible usage, such as no printing banner pages.
- **Manage and track device usage.** Xerox® Standard Accounting provides reports for greater cost control of all device functions. Advanced solutions from Xerox Business Innovation Partners deliver even more helpful tools for larger office environments.



Keep your costs under control.

User Permissions allow the ability to restrict access to print features by user, group, time of day, or by application. For example, rules can be set so that all Microsoft® Outlook® emails automatically print in duplex mode and in black-and-white; and all PowerPoint® presentations print in color.



Xerox® WorkCentre® 7970
Optimized for:



Scanning



Sustainability



Security



Networking



Solutions



Wi-Fi

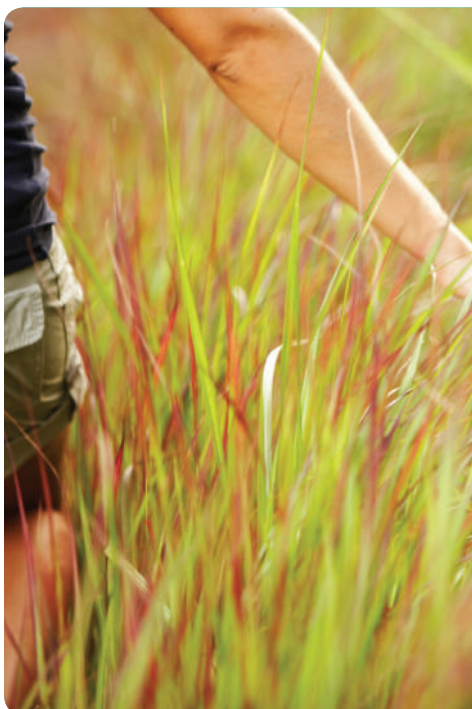
- 1 **High Capacity Feeder***. Holds 2,000 sheets of letter / A4 paper, increasing the maximum paper capacity to 5,140 sheets.
- 2 **Exceptional media flexibility**. The WorkCentre 7970 handles a wider range of media types and weight from more trays than most devices in its class. It supports up to 300 gsm and media sizes up to 12.6 x 19 in (320 x 483 mm).
- 3 **Print envelopes easily** using our optional envelope tray (replaces Tray 1).

- 4 **Dual-head, single pass scanner** saves time by simultaneously scanning both sides of two-sided documents at up to 133 impressions per minute.
- 5 **Large work surface** (included with Convenience Stapler) gives you plenty of room to sort documents.
- 6 **BR Finisher*** gives you advanced finishing functions at a great value.

- 7 **BR Booklet Maker Finisher*** provides advanced finishing with booklet making capabilities.
- 8 **C Fold / Z Fold Unit*** adds Z-folding, Letter Z-folding and Z half folding to the BR Finisher or BR Booklet Maker Finisher.



* Optional



Environmental Features

Greatly reduce your energy consumption with the WorkCentre 7970.

Conserve Energy with Green Technologies

- **EA Toner**. Our EA Toner with ultra low-melt technology achieves minimum fusing temperature at 68 degrees F (20 degrees C) lower than conventional toner for even more energy savings and brilliant glossy output even on ordinary paper.
- **Induction heating**. The newly developed, heat-efficient IH fuser does not require preheating, which helps reduce power consumption in standby mode by 44% compared to a resistance heating device. Plus, the device recovers from energy saver mode in less than 10 seconds.
- **LED scanner**. The power consumption of the scanner using LED lighting is 1/3 of traditional scanners using fluorescent lamps.

Manage Resource Usage and Print Responsibly

- **Energy Management**. With Cisco® EnergyWise, enabled by Xerox® Power MIB (Management Information Base), you can control, manage and report your device's power consumption information, and set optimal power states and timeout intervals.
- **Earth-smart printing**. Our innovative new Earth Smart feature allows you to choose the most environmentally sensitive options for your print jobs.
- **ENERGY STAR® and EPEAT qualified**. WorkCentre 7970 devices meet the stringent ENERGY STAR requirements for energy use and the EPEAT (United States) comprehensive environmental rating system.

The WorkCentre 7970 Color Multifunction Printer is built on Xerox® ConnectKey® Technology. For more information, go to www.connectkey.com.

Device Specifications		WorkCentre 7970
Speed		Up to 70 ppm color and black-and-white
Duty Cycle ¹		Up to 300,000 pages / month
Hard Drive / Processor / Memory		Minimum 250 GB HDD / 1.2 GHz Dual-core / 2 GB system plus 1 GB page memory
Connectivity		10/100/1000Base-T Ethernet, High-Speed USB 2.0 direct print, Optional Wi-Fi (with Xerox® USB Wireless Adapter)
Controller Features		Unified Address Book, Remote Control Panel, Online Support (accessed from user interface and print driver), Configuration Cloning
Copy and Print		
Copy and Print Resolution		Copy: Up to 600 x 600 dpi; Print: Up to 1200 x 2400 dpi
First-print-out Time (as fast as)		6.9 seconds color / 4.2 seconds black-and-white
Page Description Languages		Adobe® PostScript® 3™, PDF, PCL® 5c / PCL 6, XML Paper Specification (XPS®) (Optional)
Print Features		Print from USB, Earth Smart Driver Settings, Job Identification, Booklet Creation, Store and Recall Driver Settings, Bi-directional Status, Scaling, Job Monitoring, Color By Words
Mobile Printing		Apple® AirPrint™, Xerox® PrintBack, Xerox® Mobile Print Solution (Optional), Xerox® Mobile Print Cloud (Optional), Mopria™ Certified, Xerox® Print Service Plug-in for Android™
Scan	Standard	Destinations: Scan to Mailbox, Scan to USB, Scan to Email, Scan to Network; File Formats: PDF, PDF/A, XPS, JPEG, TIFF; Convenience Features: Scan to Home, Single Touch Scan, Searchable PDF, Single/Multi-Page PDF / XPS / TIFF, Encrypted / Password Protected PDF, Linearized PDF / PDF/A
	Optional	Software Packages: ConnectKey® for SharePoint®, ConnectKey® for DocuShare®, ConnectKey® Share to Cloud, Xerox® Scan to PC Desktop® SE and Professional, other solutions available through various Xerox Business Innovation Partners
Fax	Standard	Internet Fax, Fax Build Job, Network Server Fax Enablement
	Optional	Fax Forward to Email or SMB, Walk-up Fax (one-line and two-line options, includes LAN Fax)
Security	Standard	McAfee® Embedded, McAfee ePolicy (ePO) Compatible, HDD Overwrite, 256-bit Encryption (FIPS 140-2 compliant), Common Criteria Certification (ISO 15408), Secure Print, Secure Fax, Secure Scan, Secure Email, Cisco® TrustSec Identity Services Engine (ISE) Integration, Network Authentication, SSL, SNMPv3, Audit Log, Access Controls, User Permissions
	Optional	McAfee Integrity Control, Xerox Secure Access Unified ID System®, Smart Card Enablement Kit (CAC/PIV/.NET)
Accounting	Standard	Xerox® Standard Accounting (Copy, Print, Scan, Fax, Email), Network Accounting Enablement
	Optional	Equitrac Express®, Equitrac Office®, Equitrac Professional®, YSoft® SafeQ®, other network accounting solutions available through various Xerox Business Innovation Partners
Paper Input	Standard	Single-pass Duplex Automatic Document Feeder: 130 sheets; Speed: up to 133 ipm (duplex); Sizes: 5.5 x 8.5 in. to 11 x 17 in. / 148 x 210 mm to 297 x 420 mm Bypass Tray: 100 sheets; Custom sizes: 3.5 x 3.9 in. to 12.6 x 19 in. / 89 x 98 mm to 320 x 483 mm (SEF) Tray 1: 520 sheets; Custom sizes: 5.5 x 7.2 in. to 11.7 x 17 in. / 140 x 182 mm to 297 x 432 mm (SEF) Tray 2: 520 sheets; Custom sizes: 5.5 x 7.2 in. to 12 x 18 in. / 140 x 182 mm to SRA3 (SEF) High Capacity Tandem Tray (Total 2,000 sheets): One 867-sheet paper tray and one 1,133-sheet paper tray; Sizes: 8.5 x 11 in. / A4
	Optional	High Capacity Feeder (HCF): 2,000 sheets; Sizes: 8.5 x 11 in. / A4 long edge feed Envelope Tray: Up to 60 envelopes: #10 commercial, Monarch, DL, C5, Large U.S. Postcard, A6, Custom sizes: 3.9 x 5.8 in. to 6.4 x 9.5 in. / 98 x 148 to 162 x 241 mm
Paper Output / Finishing	Standard	Dual Offset Catch Tray: 250-sheets each Face up Tray: 100 sheets
	Optional	BR Finisher: 3,000-sheet stacker and 500-sheet top tray, 50-sheet multiposition stapling and 2/3-hole punching BR Booklet Maker Finisher: 1,500-sheet stacker and 500-sheet top tray, 50-sheet multiposition stapling and 2/3-hole punching plus saddle-stitch booklet making and V-folding C Fold / Z Fold Unit: Adds Z-folding, Letter Z-folding, Letter C-folding to the BR Finisher and BR Booklet Maker Finisher Convenience Stapler: Staples 50 sheets (based on 75 gsm), includes Work Surface

¹ Maximum volume capacity expected in any one month. Not expected to be sustained on a regular basis.

<p>Xerox Corporation</p>  <p>Document Imaging Solutions Line of the Year</p> <p>2014 Article 2014 Certificate 2015 Article 2015 Certificate</p>	<p>Xerox® App Studio</p>  <p>Outstanding Achievement in Innovation</p> <p>2015 Article 2015 Certificate</p>	<p>Xerox® Mobile Print Solution Pick of the Year</p>  <p>Outstanding Enterprise Mobile Print Solution</p> <p>2014 Article 2014 Certificate 2015 Article 2015 Certificate</p>	<p>Xerox® Mobile Print Cloud Pick of the Year</p>  <p>Outstanding Small Business Mobile Print Solution</p> <p>2013 Article 2013 Certificate 2015 Article 2015 Certificate</p>	<p>Xerox® ConnectKey® Share to Cloud</p>  <p>Outstanding Achievement in Innovation</p> <p>2013 Article 2013 Certificate</p>
---	--	---	---	--

For more detailed specifications, go to www.xerox.com/office/WC7900Specs. Build and configure your own Xerox® WorkCentre 7970 Color Multifunction Printer at www.buildyourownxerox.com/connectkey.

